

RURAL SPECIAL IMPROVEMENT DISTRICT NO. 605
A RESOLUTION CREATING A 60% RURAL
SPECIAL IMPROVEMENT DISTRICT

WHEREAS, the Board of County Commissioners of Yellowstone County, Montana, gave notice of the passage of the Resolution of Intention to create the above-named district by causing the same to be published in two issues of the Billings Times and also caused a copy of such notice to be posted in three public places within the boundaries of the district, and mailed to every person, firm or corporation owning real property within the proposed district at their last known address upon the same day as such notice was first published, the first publication of said notice and proof of its publication, posting and mailing as aforesaid is on file with the County Clerk and Recorder, and

WHEREAS, the Board of County Commissioners on the 21st day of November, 1978, met and heard all protests made against the creation of the district or making the proposed improvements, and

WHEREAS, the Board of County Commissioners hereby finds, determines and declares that:

(1) All lands are benefited and no lands which are not benefited have been included within the district.

(2) No protests were filed against the creation of said district or that the protests were insufficient and should be overruled or denied.

NOW THEREFORE, BE IT RESOLVED by the Board of County Commissioners of Yellowstone County, Montana, that:

1. The commissioners have acquired jurisdiction to order proposed improvements, and they do hereby create Rural Special District No. 605.

2. The general character of the improvements are described and designated on Exhibit "A" hereto.

3. The boundaries of the district are as described and designated on Exhibit "B" hereto and the lands included within the district are as shown on the map attached hereto as Exhibit "C".

4. The estimated cost of the proposed improvements including construction costs, incidental expenses, engineering fees, legal fees and administrative costs, exclusive of interest charges and county participation, if any, will be the sum of \$ 227,000.00, as described in the engineer's estimate attached hereto as Exhibit "D".

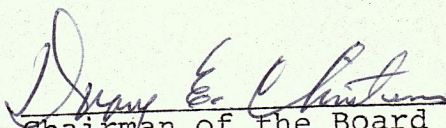
5. The Commission hereby finds, determines and declares that all of the lands included within the district are benefited and that the lands included will be enhanced in value to the extent of the assessments to be levied upon such lands, and that all lands included within the district should be assessed accordingly to pay the costs and expenses of the district.

6. All of the costs and expenses of the district will be assessed against the entire district, and each lot or parcel of land within the district, will be assessed for that part of the whole costs which its area bears to the entire district, exclusive of streets, avenues, alleys and public places.

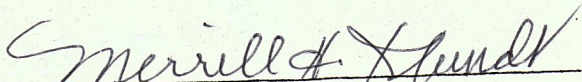
7. The assessments for all improvements and costs of the district shall be paid in ten (10) annual installments from and after the completion of the improvements, and, for the entire costs and expense of making the improvements, bonds are to be drawn on the fund of Rural Special Improvement District, and made payable exclusively from said fund, and such

bonds shall be of the denomination of \$1,000.00 or multiples or fractions thereof. All money derived from the collection of said assessments by installments or otherwise shall constitute a fund to be known as "Fund of Rural Special Improvement District No. 605."

PASSED BY the Board of County Commissioners of Yellowstone County, Montana, this 21st day of November, 1978.



Chairman of the Board of County Commissioners, Yellowstone County, Montana.


Clerk

September 26, 2978

McIntosh Subdivision R.S.I.D.

Character of Improvements.

Water main installation and service connections to 1" of the property lines. Street construction including excavation, gravel base, cushion and chip seal of street surface to include prime oil, chip seal oil and a single application of aggregate cover.

EXHIBIT A

September 26, 1978

McIntosh Subdivision R.S.I.D.

Boundary Description.

Block 1 - Lots 2,3,4,5.

Block 2 - Lots 1,2,3,4.

Block 3 - Lots 1,2,3,4

Block 4 - Lots 1,2,5

Block 5 - Lots 1,2,3,4,5,6,7,8,9,10,11,12,13,14.


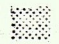
Block 6 - Lots 1,2,3,4,5,6,7,8,9,10,11,12.

McIntosh Subdivision, located in SE $\frac{1}{4}$ Sec 19, SW $\frac{1}{4}$ Sec 20,
T 1N,R.27E. P.M.M., Yellowstone County, Montana.

EXHIBIT B

McINTOSH SUBDIVISION

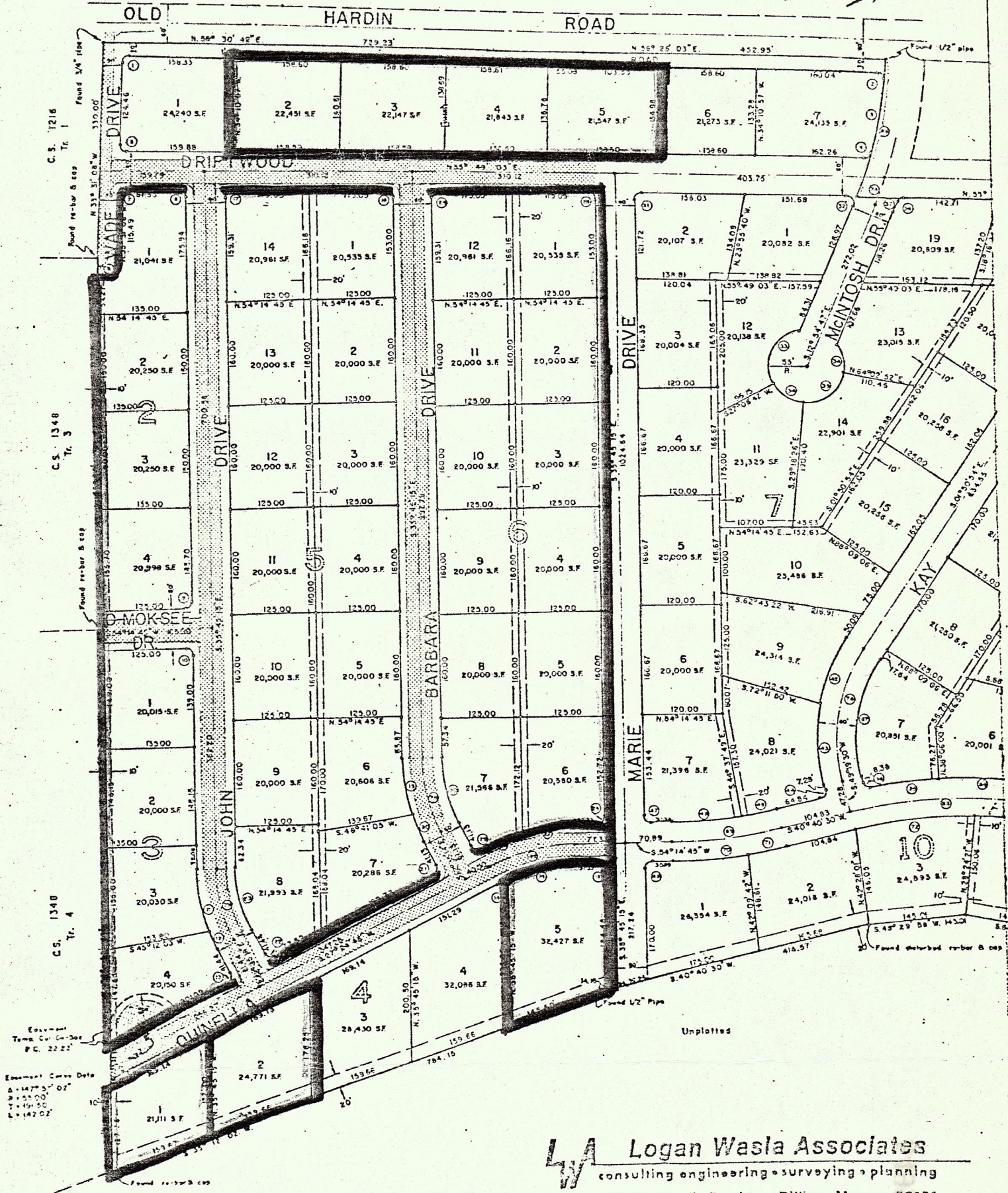
LEGEND

-  District Area
-  Improvement Area



C.S. 671

Opportunity Sub.



Logan Wasla Associates
 consulting engineering • surveying • planning
 1934 Old Hardin Road - Billings, Montana 89101

September 26, 1978

McIntosh Subdivision R.S.I.D.

Estimated cost

Water System

8" A.C. Water line complete	1175 l.f.	\$16,500
6" A.C. Water line complete	3485 l.f.	\$42,000

Street Construction

Excavation	15,500 C.Y.	\$60,000
Base Gravel	6,200 C.Y.	45,000
Crushed Cushion	800 C.Y.	7,500
Prime Oil	4,220 gal.	3,500
Chip Oil	4,820 gal.	4,000
Aggregate Cover	210 Ton	3,000

Total Construction

\$181,500

Administration, Legal, Testing
Engineering and contingencies.

\$ 45,500

Total Estimated Cost

\$227,000

EXHIBIT D